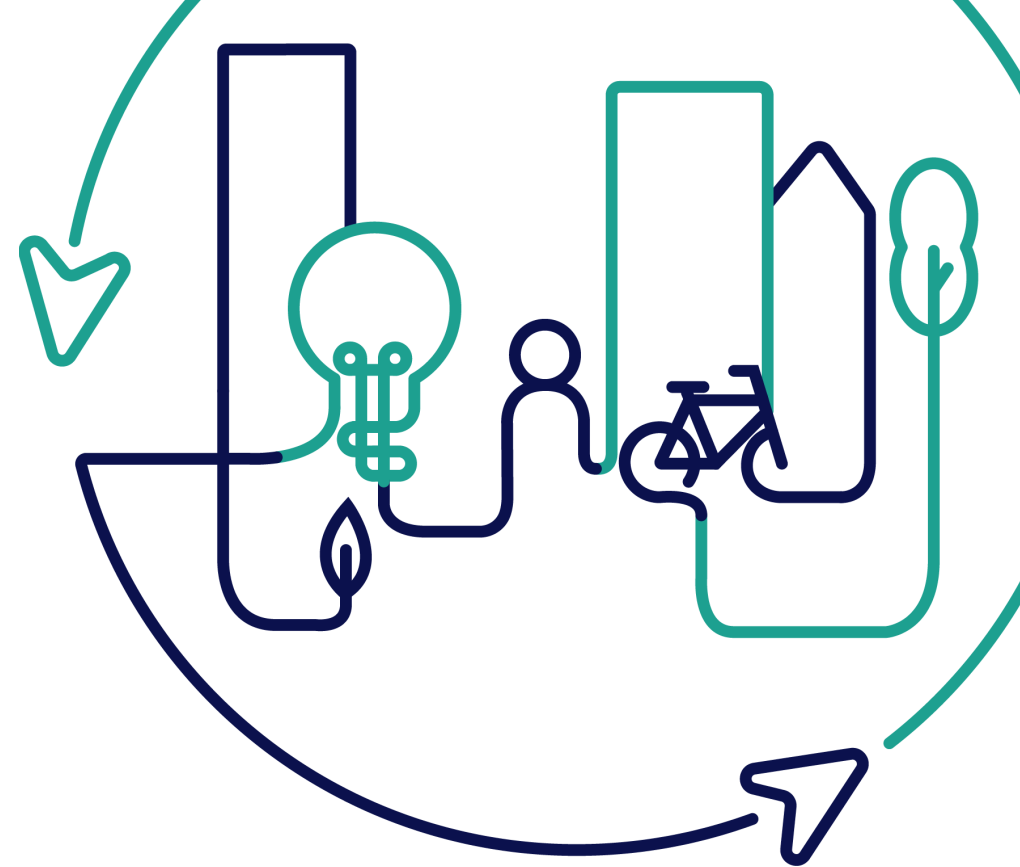
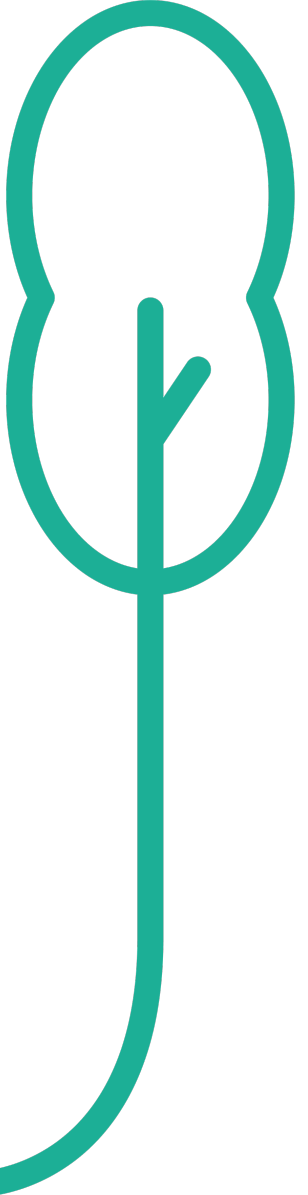


EUROPEAN U R B A N INITIATIVE



Co-funded by
the European Union



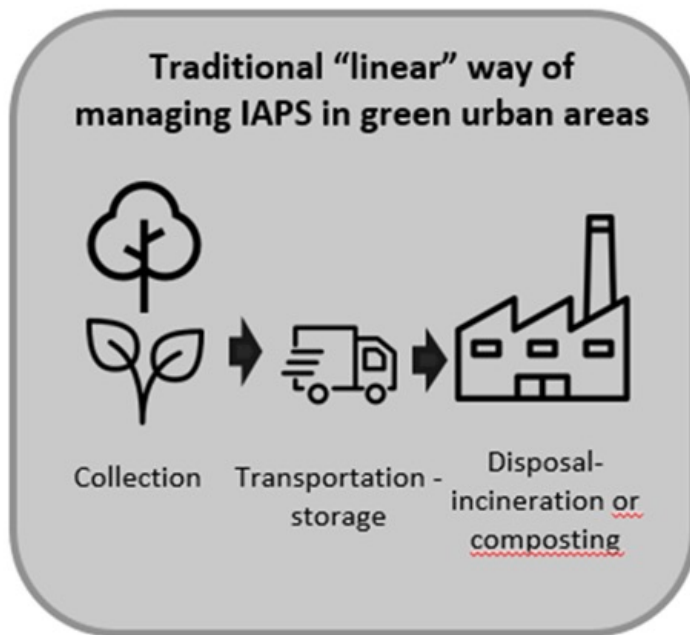
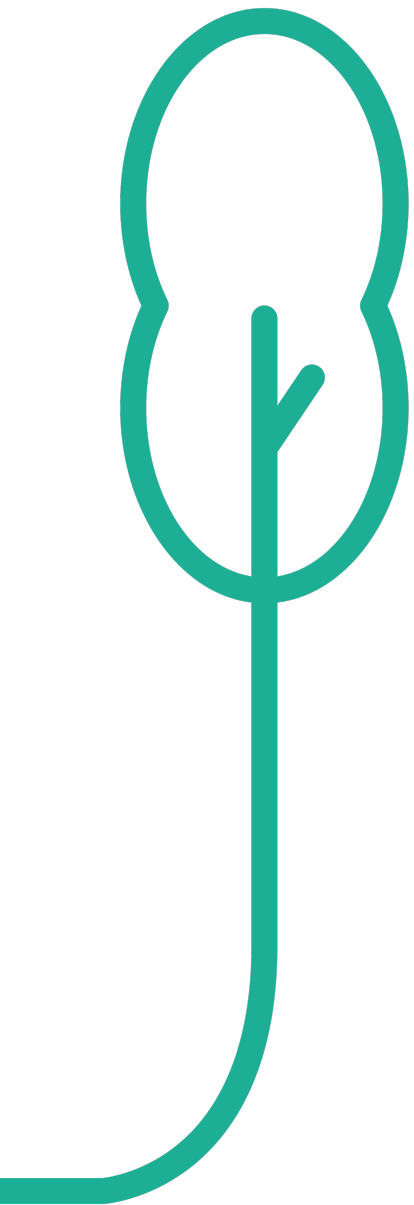
Invasive alien plants are often **overlooked by public authorities at local, national and European level**. According to the Institute for European Environmental Policy, invasive alien species (both plants and animals) cost EU at least **12,5 billion EUR a year**.



Giant Hogweed Photo Bristol live



Japanese knotweed Photo slate.com



APPLAUSE



- APPLAUSE project (5.202.590 EUR)



City of
Ljubljana



VODOVOD
KANALIZACIJA
SNAGA

Univerza v Ljubljani



NATIONAL INSTITUTE
OF CHEMISTRY



PULP AND PAPER
INSTITUTE, LJUBLJANA
Innovative Cellulose Products



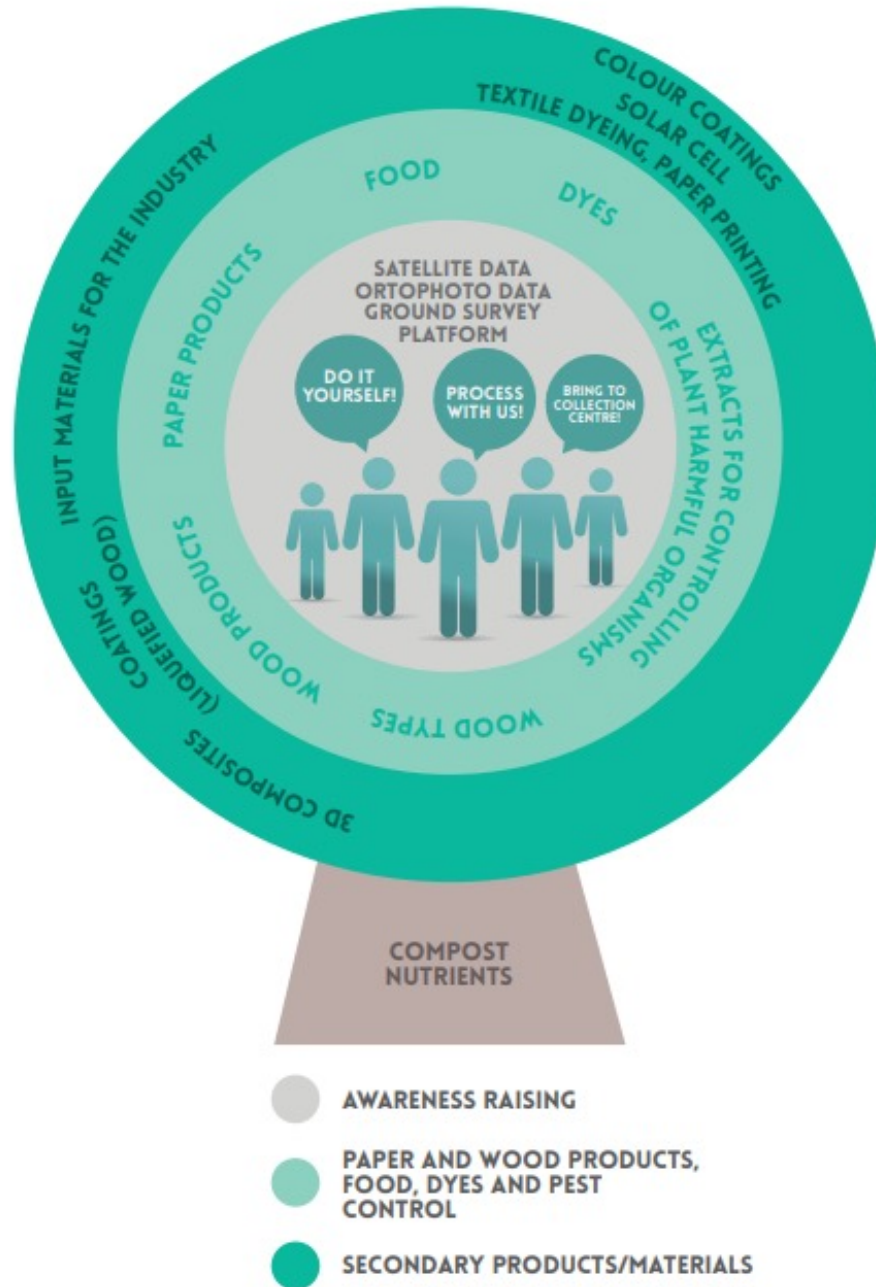
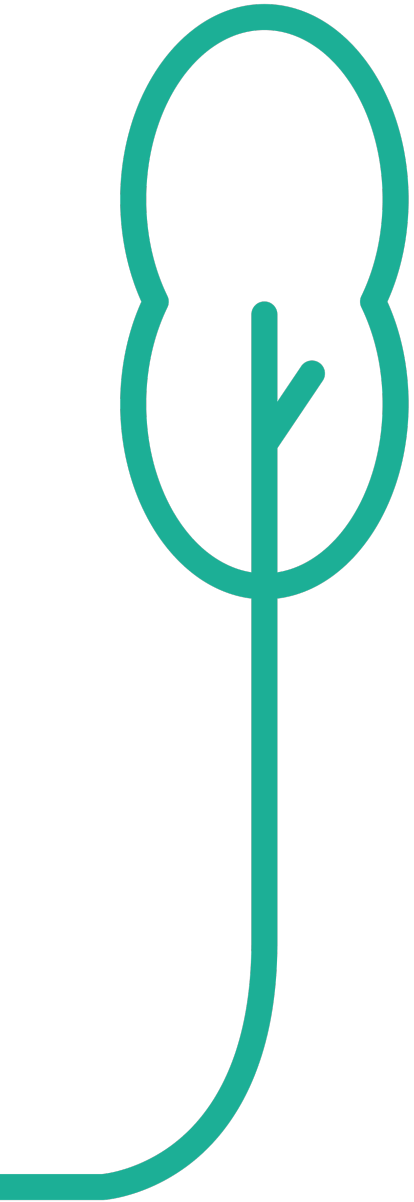
TRAJNA

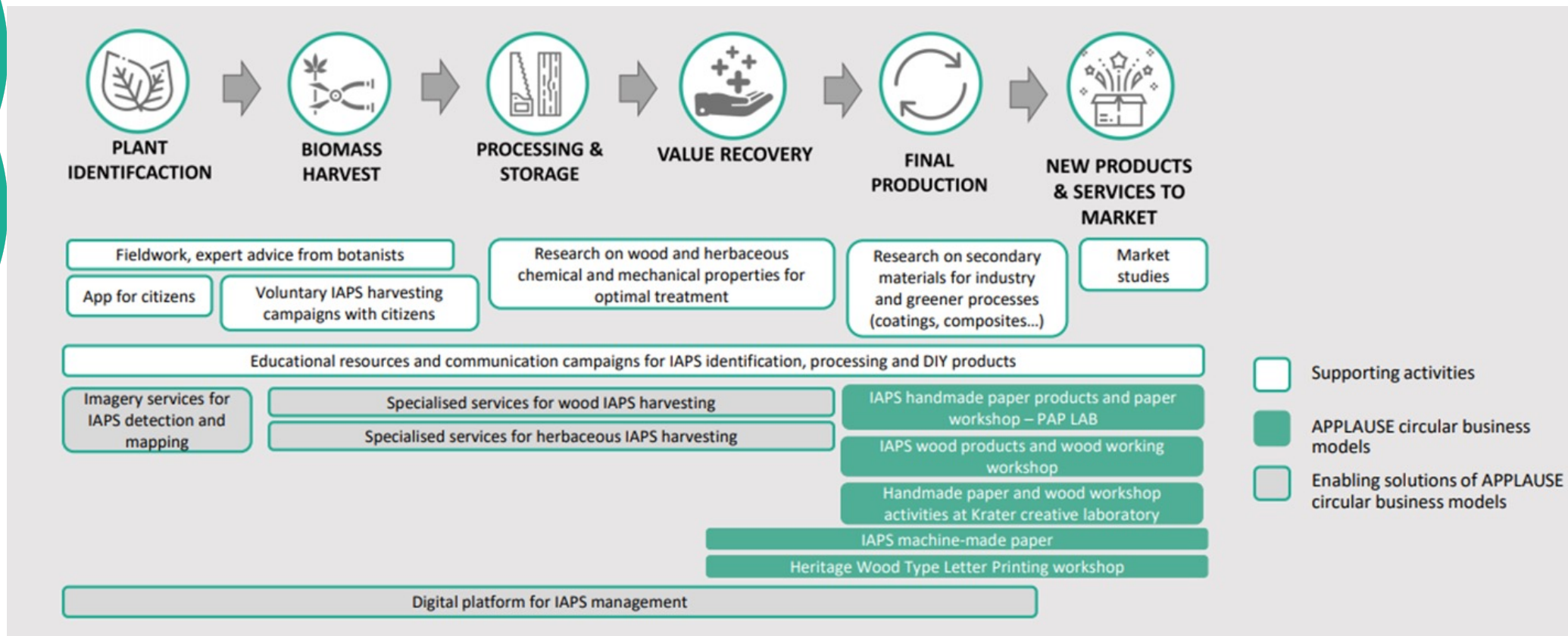
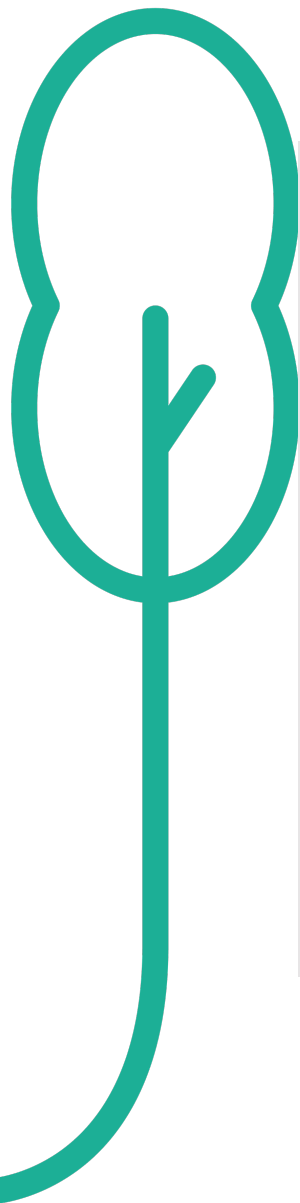
tiporenesansa



• • • SPACE • SI

SLOVENIAN CENTRE OF EXCELLENCE
FOR SPACE SCIENCE AND TECHNOLOGIES





A teal-colored stylized tree logo is positioned on the left side of the slide. It features a thick vertical trunk that curves slightly at the bottom, and a rounded, cloud-like canopy at the top.

Recognitions and awards

- EPSA 2021 (European Public Sector Awards) – 3rd place in the Green Public Administration category
- OECD OPSI portal - Case Study Library
- Premik naprej 2020 (competition for the best improvement in public administration) – finalist
- 1 patent gained, 1 is still in the process of verification
- 25 published scientific articles
- 70 conference presentations



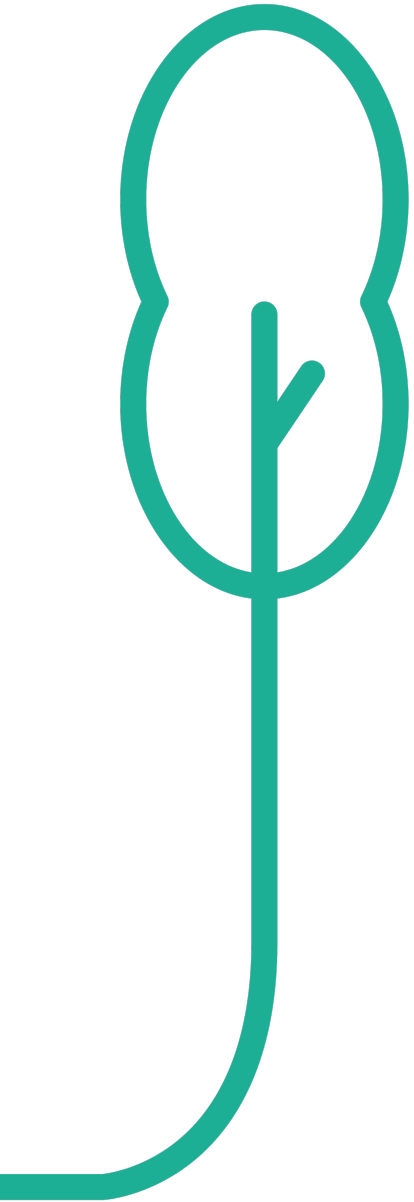
Why apply?

- New city management – innovation implementation is a must
- Opportunity for testing more risky ideas/solutions – public sector under heavy regulation (taxpayers money)
- 50% advanced payment
- Assemble value chains - Meet interesting people/make friends
- Gain new knowledge – new skills



Our experience

It is ok to fail!
Failure is a part of
success.

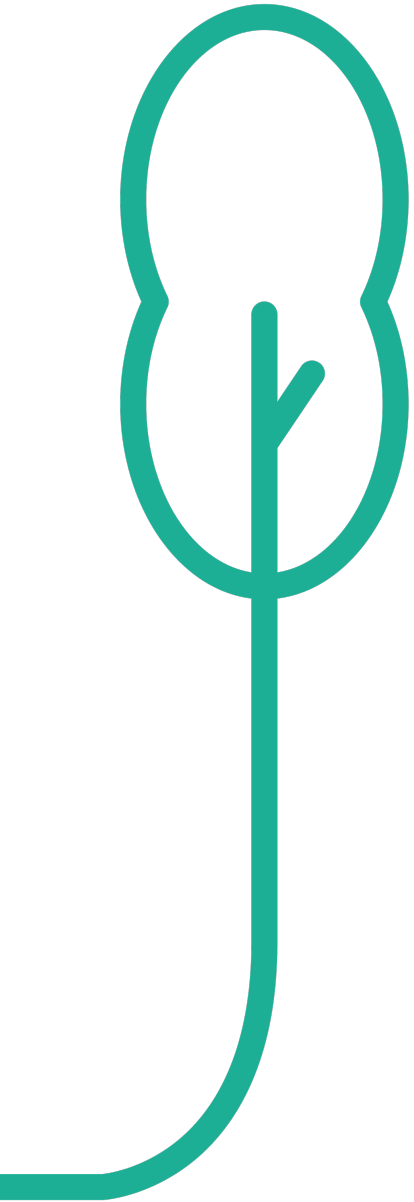


Our experience

Excellent UIA expert = critical friend

Focusing on preparation of APPLAUSE business
model

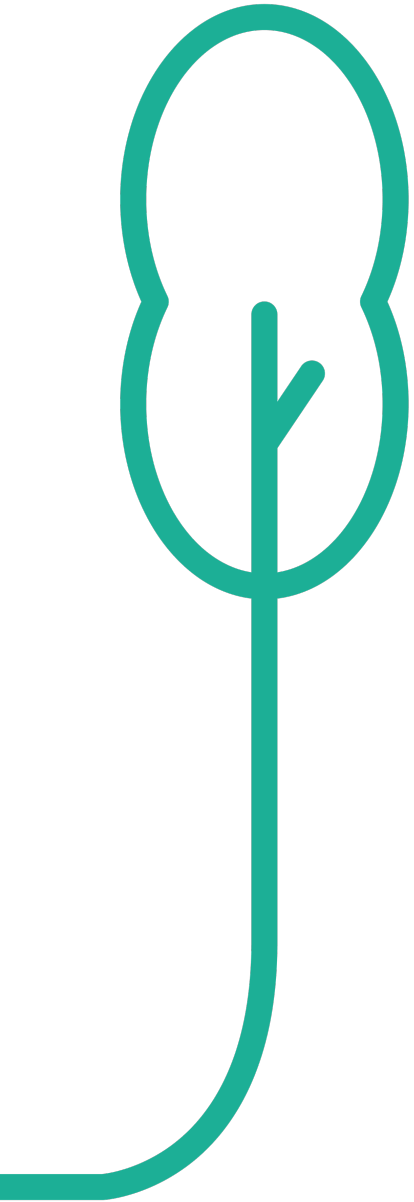
Journals and Zoom-In reports



Our experience

Very dedicated and helpful UIA staff
willingness to find/support solutions





Our experience – Partnership

Mapping of potential partners

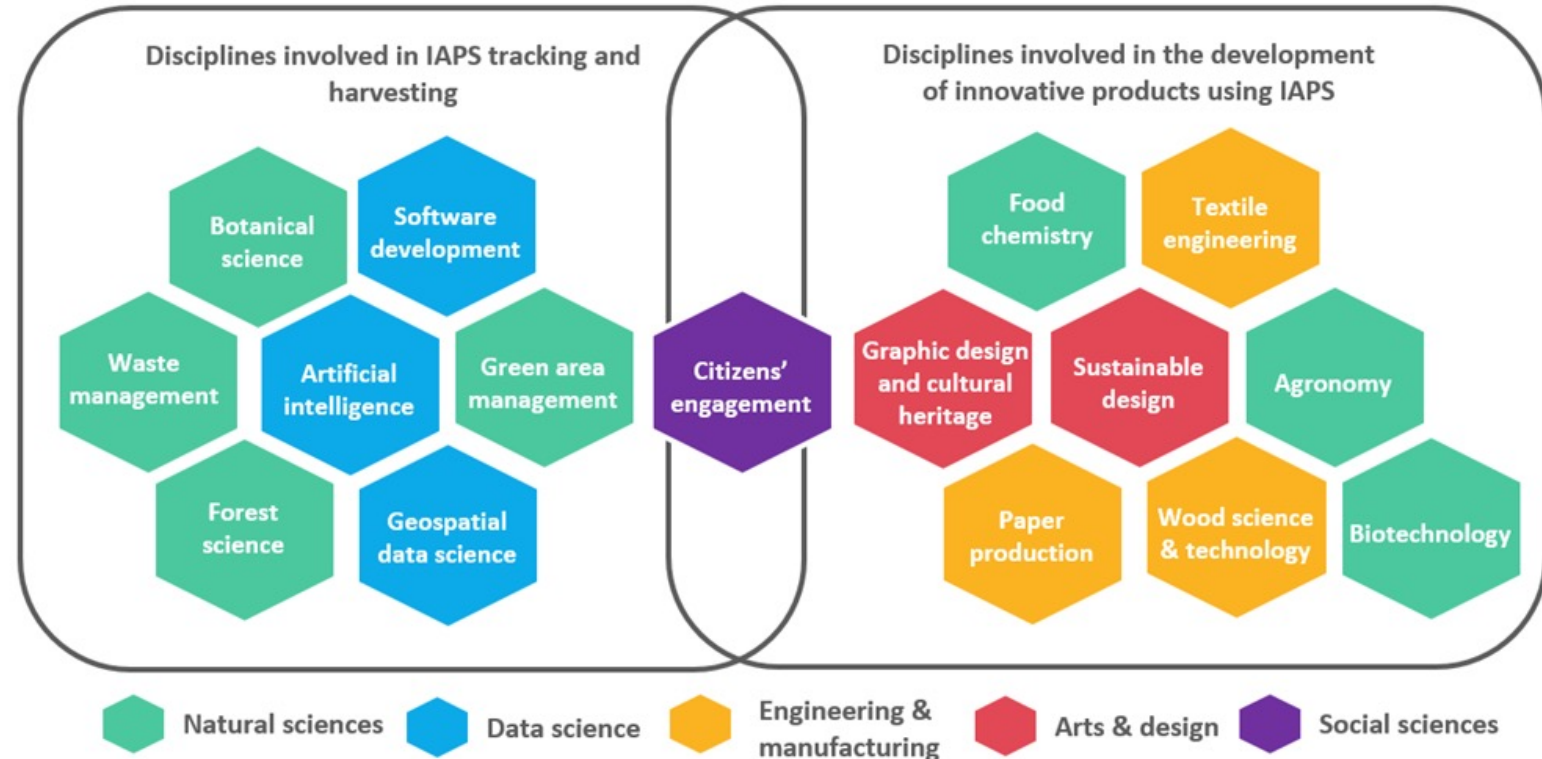
Diverse partnership – cover the whole value chain

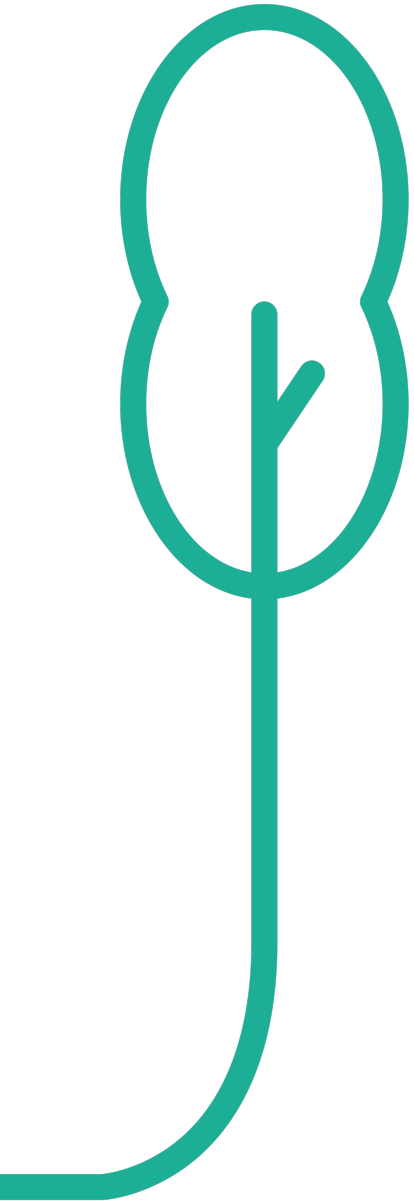
In-person meeting with potential partners

The best in the field : Compatibility

Our experience – Partnership

Take enough time to learn the common language –
social:natural sciences, definitions, IAPS + or -





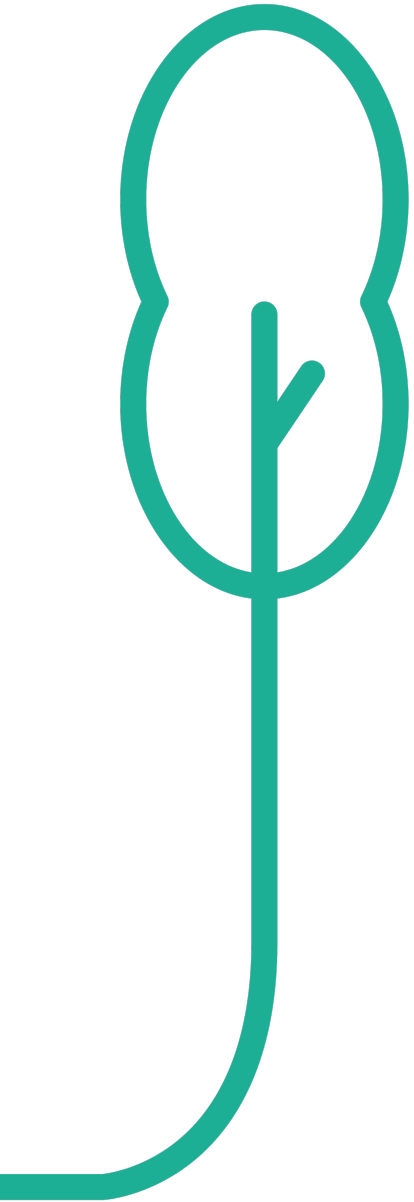
Our experience – Partnership

Map of roles & responsibilities

Set rules and stick to them!

Meetings as a teambuildings

Yearly visits to PP by LP



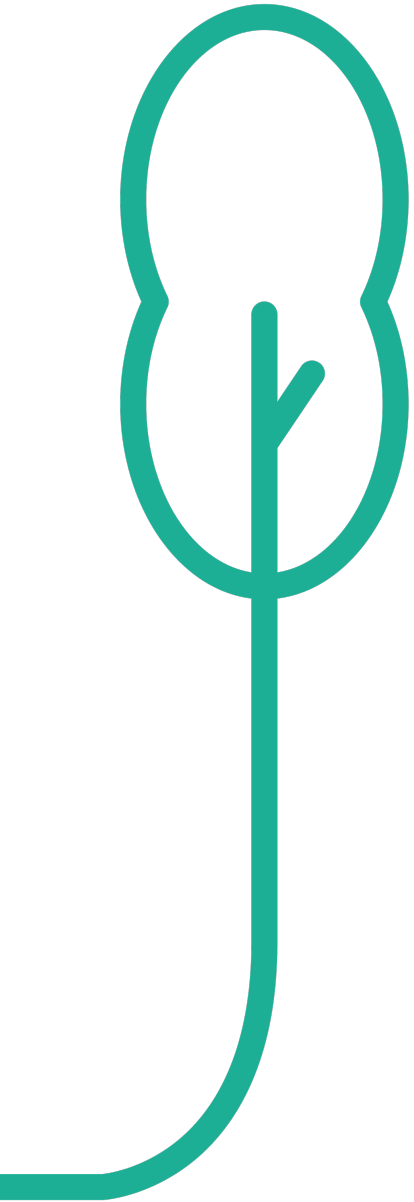
Our experience – Innovative character

Intellectual property rights!

Be patient!

Do not panic!

In case of major obstacles – contact your project officer



Our experience – Innovative character

Benchmarking

Go-to-market strategy – designing and testing products, interviews with potential buyers and shop owners, buying channels



Our experience

Performance indicators

KPI's : Innovations?

External evaluation expert in the phase when project application is written or in the beginning of the project implementation at the latest

Mid-term evaluations



Tips & tricks

Constant Communication!

In case multiple partners work on the same activities – agree on a protocol

Risk register

Pay special attention to partners from the non-governmental sector or with a smaller number of employees



Tips & tricks

Stakeholders involvement is a process (easy, fun activities)

Use established channels

Publication Lessons learned

<https://www.ljubljana.si/en/applause/>

Thank you for your attention.
Contact: zala.strojin-bozic@ljubljana.si

